

HIWIN®

MULTI-AXIS ROBOT



▲
+
J4
-
▼

◀ - J3 + ▶

GREASE IN

Articulated Robot

RT605-GB RA605-GC



RT605-710-GB

RA605-710-GC



Features

A compact sized articulated robot with arm length and payload similar to a human arm. Its flexible design and small footprint makes it perfect in applications like assembly lines. It can also be used in inverted applications to save space.

Application

Assembly, dispensing, visual inspection, small components loading and unloading, inverted application.

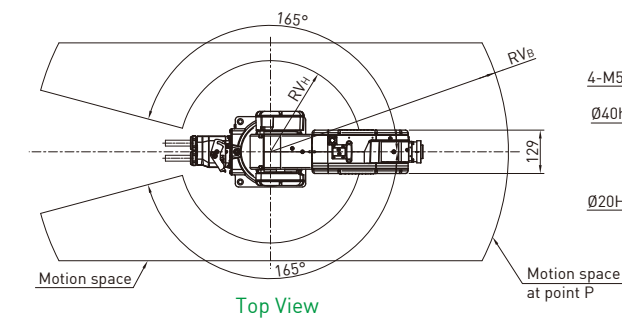
Model	RT605-GB		RA605-GC	
Degrees of freedom	6			
Rated payload[kg]	5			
Maximum payload[kg]	7			
Max. reach radius[mm]	710	909	710	909
Working range [deg]	J1	±165		
	J2	+85 / -125		
	J3	+185 / -55		
	J4	±190		
	J5	±115		
	J6	±360		
Repeatability[mm]	±0.03	±0.04	±0.02	±0.03
Cycle time[s]*Note 1	0.5			
Weight[kg]	40	45	40	45
Protection rating	IP32		IP65	
Controller	RCT605-GB		RCA605-GC	
Pneumatics	Two channels of pneumatic connection			
Safety/Environmental standard	-		CE/RoHS2.0	

* Note 1: Based on a back-and-forth movement over a vertical distance of 25mm and a horizontal distance of 300mm.

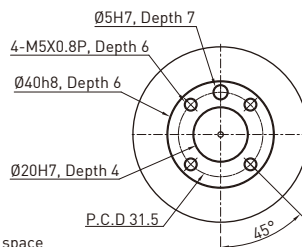
Dimensions

Model / Dimensions	V _A	V _B	V _C	V _D	V _E	V _F	V _G	V _H	V _I	V _J	V _K
RT605-710-GB	650	710	1215	1055	272	67	338	R242	R340	R429	340
RT605-710-GC											
RA605-909-GB	848.1	909.8	1571	1254.8	332	24.7	438	R302.5	R439.8	R564.3	440
RA605-909-GC											

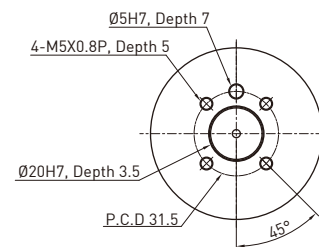
Unit:mm



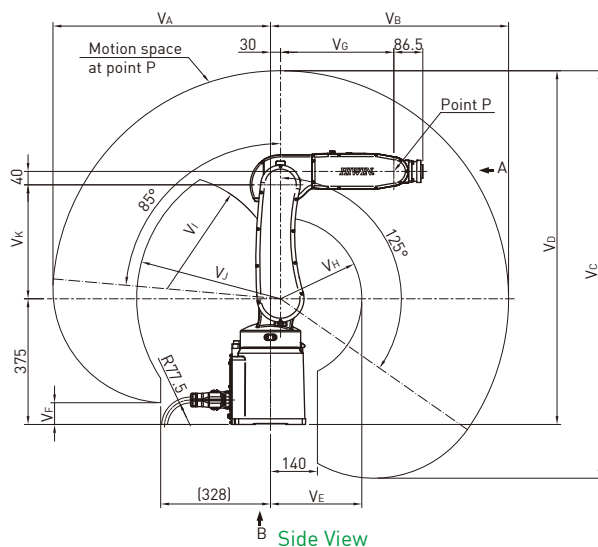
Top View



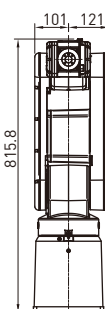
VIEW A
Mounting Flange Detail
(RA605-GC Series)



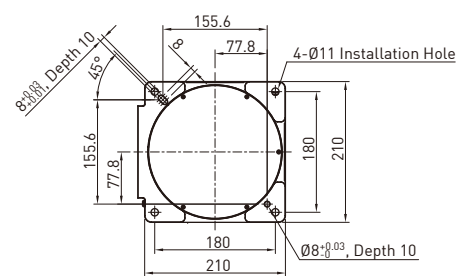
VIEW A
Mounting Flange Detail
(RT605-GB Series)



Side View



Front View



VIEW B
Installation Interface Detail

Articulated Robot

RA610-GC



RA610-1476-GC



RA610-1151-GC



Features

Slender and agile articulated robot with six degrees-of-freedom, it can meet customers' optimal load and work range requirements. The design is well-suited for machine tending applications. It can also be integrated with a vision system for material inspection.

Application

Packaging, deburring, dispensing, visual inspection, machine tending.

Model	RA610-GC				
Degrees of freedom	6				
Rated payload[kg]	30	12	10	10	7
Maximum payload[kg]	32	14	12	12	9
Max. reach radius[mm]	1151	1355	1476	1672	1869
Working range [deg]	J1	±170			
	J2	+85 / -150	+95 / -150		
	J3	+185 / -85			
	J4	±190			
	J5	±130	±135		
	J6	±360			
Repeatability[mm]	±0.06	±0.05	±0.06		
Cycle time[s]*Note 1	1				
Weight[kg]	136	143	147	150	152
Protection rating	IP54(Wrist:IP65)				
Controller	RCA610-GC				
Pneumatics	Two channels of pneumatic connection		Three pneumatic solenoid valves connections		
Safety/Environmental standard	CE/RoHS2.0				

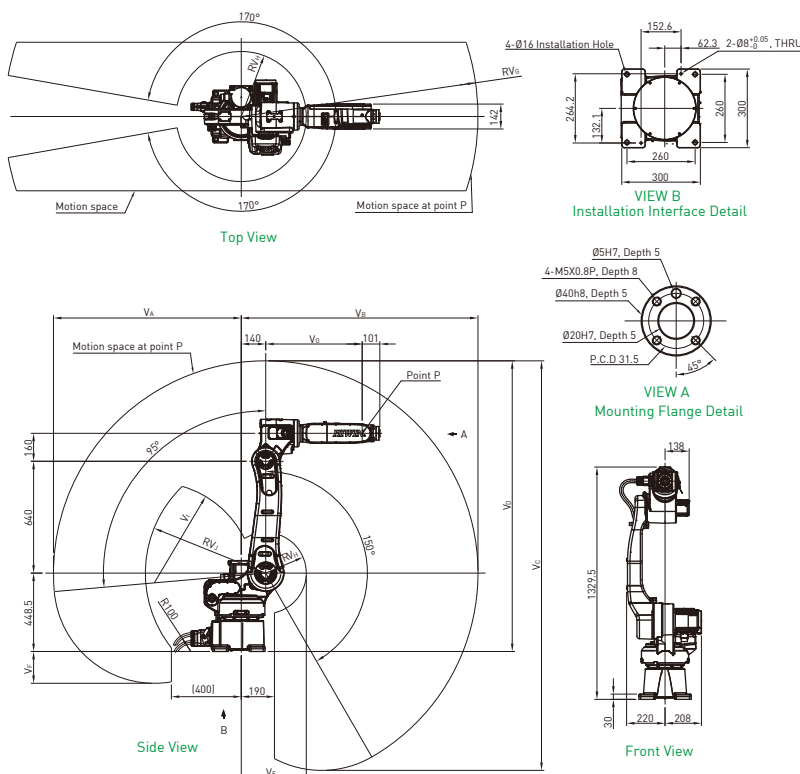
* Note 1: Based on a back-and-forth movement over a vertical distance of 25mm and a horizontal distance of 300mm.

Dimensions

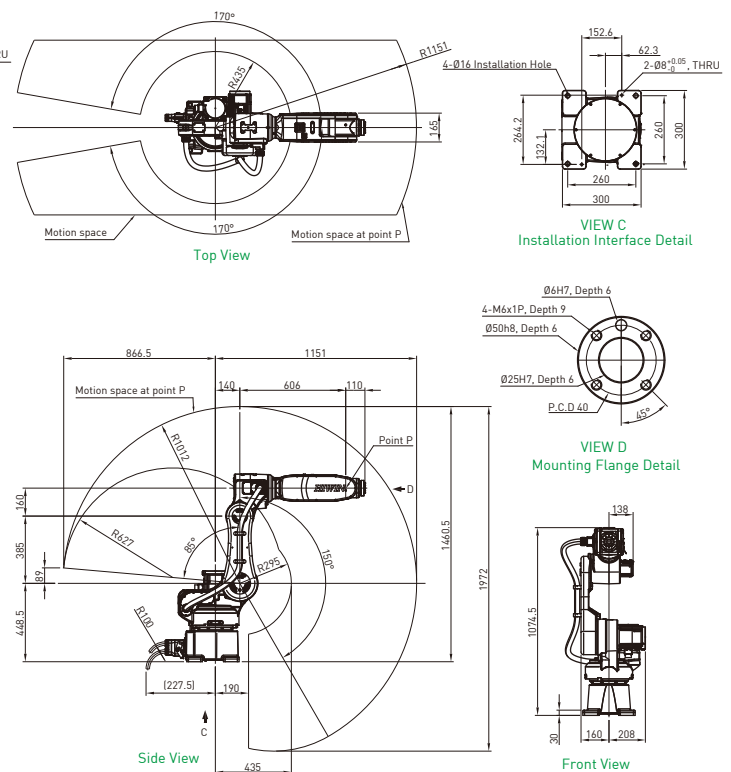
Model / Dimensions	V _A	V _B	V _C	V _D	V _E	V _F	V _G	V _H	V _I	V _J
RA610-1355-GC	1075	1355	2343	1663	372.5	182	552	R232.5	R575	R688
RA610-1476-GC	1196	1476	2587	1785	368	304	678	R228	R697	R784
RA610-1672-GC	1392	1672	2979	1981	463	500	878	R323	R892	R951
RA610-1869-GC	1589	1869	3374	2178	630	697	1078	R490	R1089	R1129

Unit:mm

RA610-GC



RA610-1151-GC



SCARA Robot

RS405

RS410



RS410 Protection

RS405 Standard



Features

High precision and high flexibility SCARA robot is widely used in various automation field. It can be easily integrated with peripheral control units and combined with linear modules, vision systems, end effectors etc. In addition to stand alone operations, it can also be used in a system workstations, and can easily adapt to changes in the production line to enhance quality and efficiency.

Application

Material handling, arranging, packaging, assembly, dispensing, component insertion, inspection.

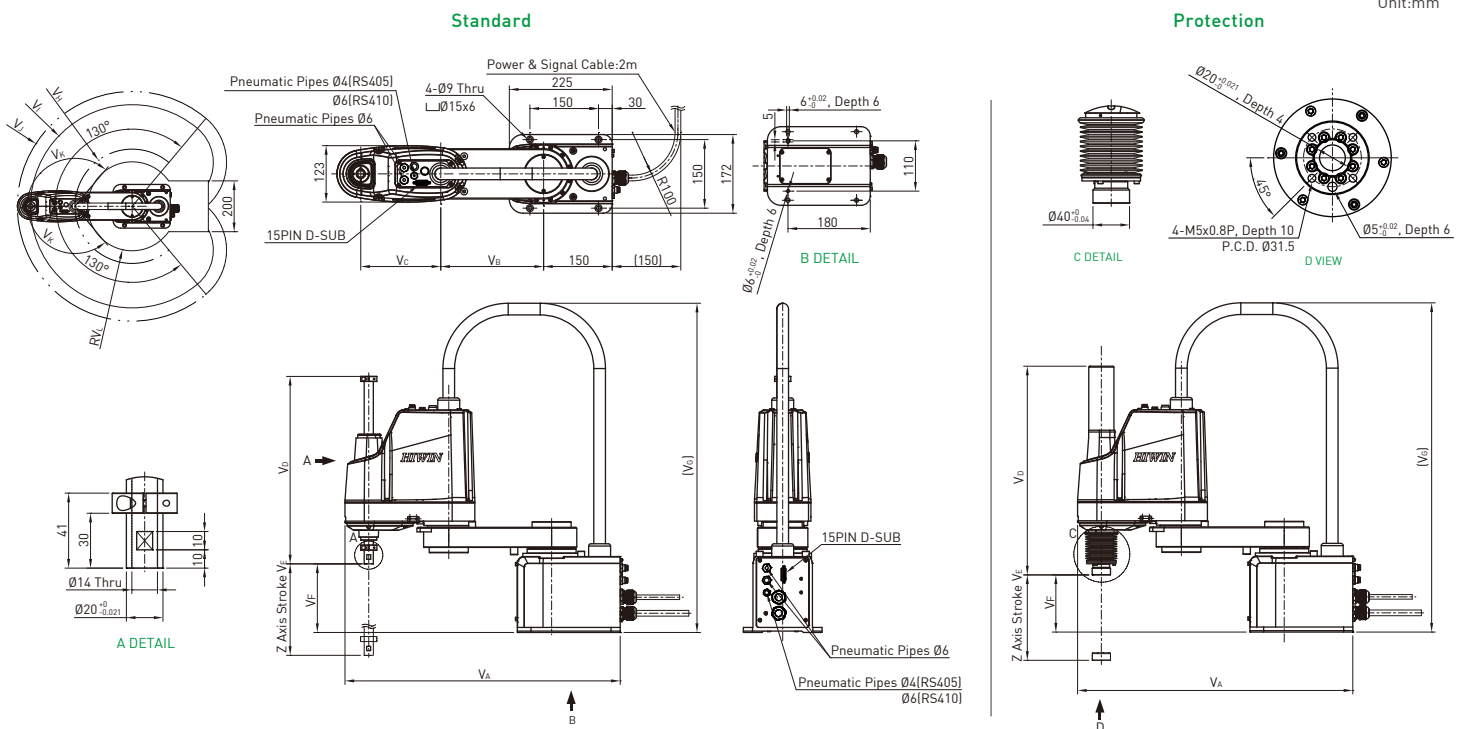
Model		RS405-LU		RS410-LU		
Degrees of freedom		4				
Rated/Max. payload [kg]		2/5		5/10		
Max. working radius [mm]		400	500	600	700	800
Working range	J1[deg]	±130				
	J2[deg]	±130		±150		
	J3[mm]	200/400				
	J4[deg]	±360				
Cycle time[s]*Note 1		0.42		0.52		
Repeatability	J1+J2[mm]	±0.01	±0.02	±0.02	±0.02	±0.025
	J3[mm]	±0.01				
	J4[deg]	±0.01				
Pneumatic joint [mm]		Ø6x2 , Ø4x1		Ø6x3		
Weight[kg]		22	23	30	31	32
Protection rating		IP20/★IP40				
Controller		RC4-A				
Safety/Environmental standard		CE/RoHS2.0				

★ Optional * Note 1: Based on a back-and-forth movement over a vertical distance of 25mm and a horizontal distance of 100mm.

Dimensions

Model / Dimensions	V _A	V _B	V _C	V _D	V _E	V _F	V _G	V _H	V _I	V _J	V _K	V _L
RS405-400-200-LU	602	225	175	410	200	150	720	R225	R400	R452	130°	R175.1
RS405-400-400-LU				610	400							R251.3
RS405-500-200-LU	702	325	175	410	200	148	720	R325	R500	R552	130°	R251.3
RS405-500-400-LU				610	400							R251.3
RS410-600-200-LU	816	325	275	410	200	167	780	R325	R600	R666	150°	R162.7
RS410-600-400-LU				610	400							R232
RS410-700-200-LU	916	425	275	410	200	167	780	R425	R700	R766	150°	R232
RS410-700-400-LU				610	400							R318.1
RS410-800-200-LU	1016	525	275	410	200	167	780	R525	R800	R866	150°	R318.1
RS410-800-400-LU				610	400							R318.1

Unit:mm



Global Sales and Customer Service Site

HIWIN GmbH

OFFENBURG, GERMANY
www.hiwin.de
www.hiwin.eu
info@hiwin.de

HIWIN Schweiz GmbH

JONA, SWITZERLAND
www.hiwin.ch
info@hiwin.ch

HIWIN KOREA

SUWON • CHANGWON, KOREA
www.hiwin.kr
info@hiwin.kr

HIWIN JAPAN

KOBE • NAGOYA • TOKYO • NAGANO •
TOHOKU • SHIZUOKA • HOKURIKU •
HIROSHIMA • FUKUOKA • KUMAMOTO,
JAPAN
www.hiwin.co.jp
info@hiwin.co.jp

HIWIN s.r.o.

BRNO, CZECH REPUBLIC
www.hiwin.cz
info@hiwin.cz

HIWIN CHINA

SUZHOU, CHINA
www.hiwin.cn
info@hiwin.cn

HIWIN USA

CHICAGO, U.S.A.
www.hiwin.us
info@hiwin.com

HIWIN FRANCE

STRASBOURG, FRANCE
www.hiwin.fr
info@hiwin.de

Mega-Fabs Motion Systems, Ltd.

HAIFA, ISRAEL
www.mega-fabs.com
info@mega-fabs.com

HIWIN Srl

BRUGHERIO, ITALY
www.hiwin.it
info@hiwin.it

HIWIN SINGAPORE

SINGAPORE
www.hiwin.sg
info@hiwin.sg

HIWIN®

HIWIN TECHNOLOGIES CORP.

No. 7, Jingke Road,
Taichung Precision Machinery Park,
Taichung 40852, Taiwan
Tel: +886-4-23594510
Fax: +886-4-23594420
www.hiwin.tw
www.hiwin.support.com
business@hiwin.tw (Sales)
robotservice@hiwin.tw (Customer Service)

- HIWIN is a registered trademark of HIWIN Technologies Corp.. For your protection, avoid buying counterfeit products from unknown sources.
- Actual products may differ from specifications and photos provided in this catalog. These differences may be the result of various factors including product improvements.
- HIWIN website for patented product directory: http://www.hiwin.tw/Products/Products_patents.aspx
- HIWIN will not sell or export products or processes restricted under the "Foreign Trade Act" or related regulations. Export of restricted products should be approved by proper authorities in accordance with relevant laws and shall not be used to manufacture or develop nuclear, biochemical, missiles or other weapons.

The specifications in this catalog are subject to change without notification.

Copyright © HIWIN Technologies Corp.

©2022 FORM C99DE12-2211 (PRINTED IN TAIWAN)