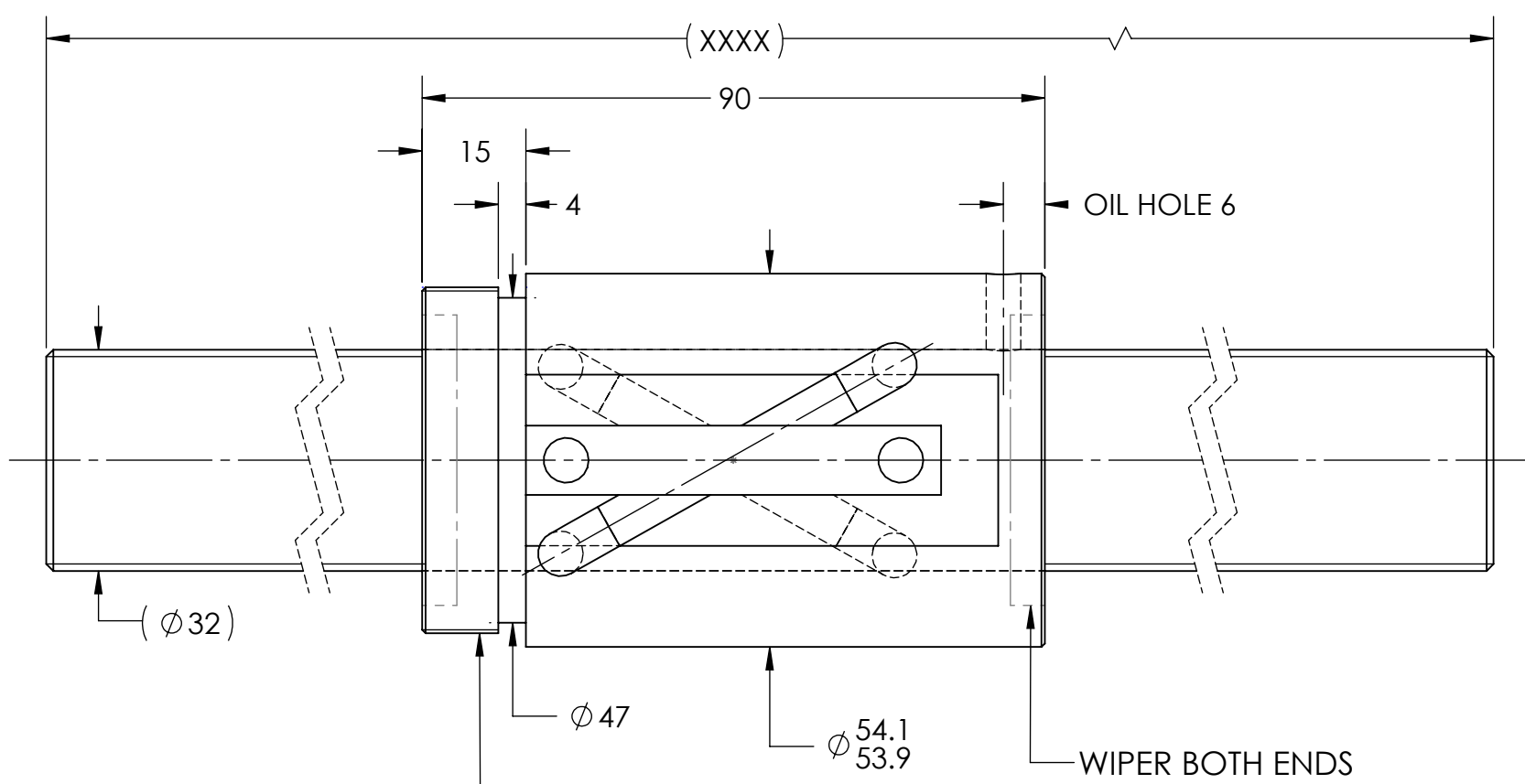
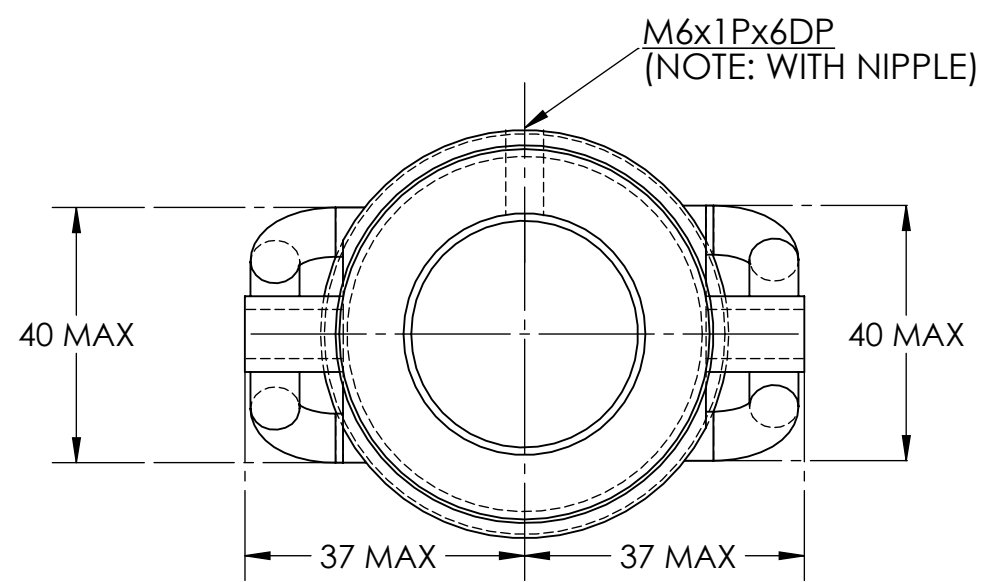


UNCONTROLLED IF PRINTED

$\sqrt{Ra6.3}$ ($\sqrt{Ra0.4}$)^G



M50X2P
 MD: 49.962
 49.682
 PD: 48.663
 48.483

BREAK SHARP EDGES UNLESS OTHERWISE SPECIFIED

PRELOAD(kgf)	~	ROUGH M/C	FIN M/C	GRD		MATERIAL	SHAFT:CF53/Equiv. NUT:SNCM220/Equiv.				
R.D.	28.392	$\sqrt{Ra25}$	$\sqrt{Ra6.3}$	$\sqrt{Ra0.4}$		THREAD BALL TRACK	HRC 56~62				
S.F. (kgf)	~	TOLERANCE mm									
DRAG TRQ(kgf-cm)	~	UP	6	30	120	300	600	1200	2400	2400	OVER
TURN DIRECTION	R	TO	6	30	120	300	600	1200	2400	2400	OVER
P.C. DIA.	33.26	± 0.1	± 0.2	± 0.3	± 0.4	± 0.5	± 0.8	± 1.0	± 1.5		
BALL DIA.	4.763	DATE		INITIALS	HIWIN CORPORATION 12455 Jim Dhamer Dr, Huntley, IL 60142						
BACKLASH	0.03 MAX	DRAWN	07/14/2022	D.W							
CIRCUIT	1.5*2	CHECKED	01/18/2023	T.C.							
LEAD ANGLE	17.03	MFG APPR.	01/18/2023	A.H							
DYNAMIC (kgf)	1681	TITLE:		STANDARD STOCK BALLSCREW							
STATIC (kgf)	4208	PART NUMBER:		4R32-32A2-DRSV-XXXX-XXXX-0.05							
LEAD/PITCH	32/8	SIZE	DWG. NO.		REV	SCALE	NTS				
		B	W-SBS-32-32-A03		N/C						

HIWIN CONFIDENTIAL