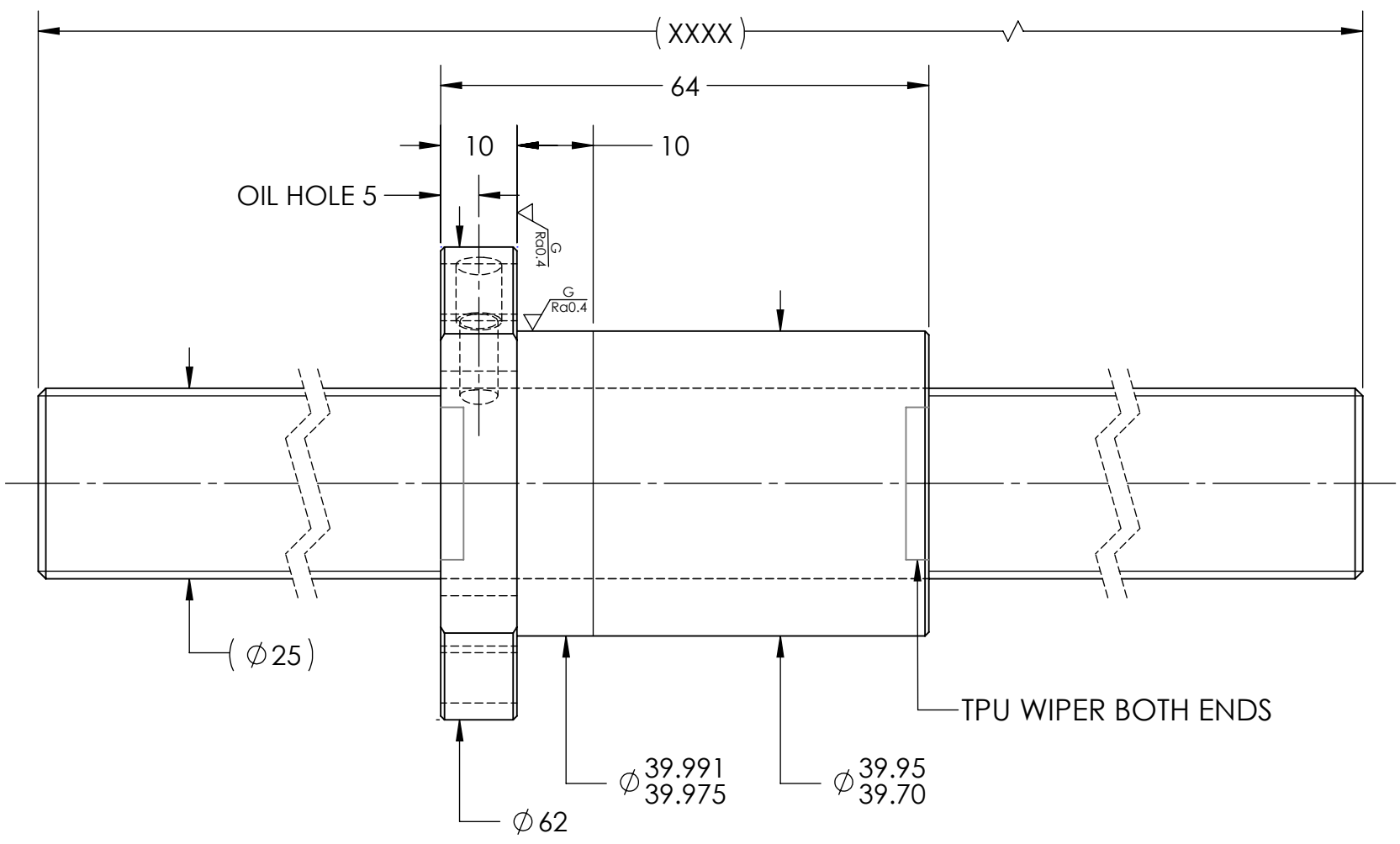
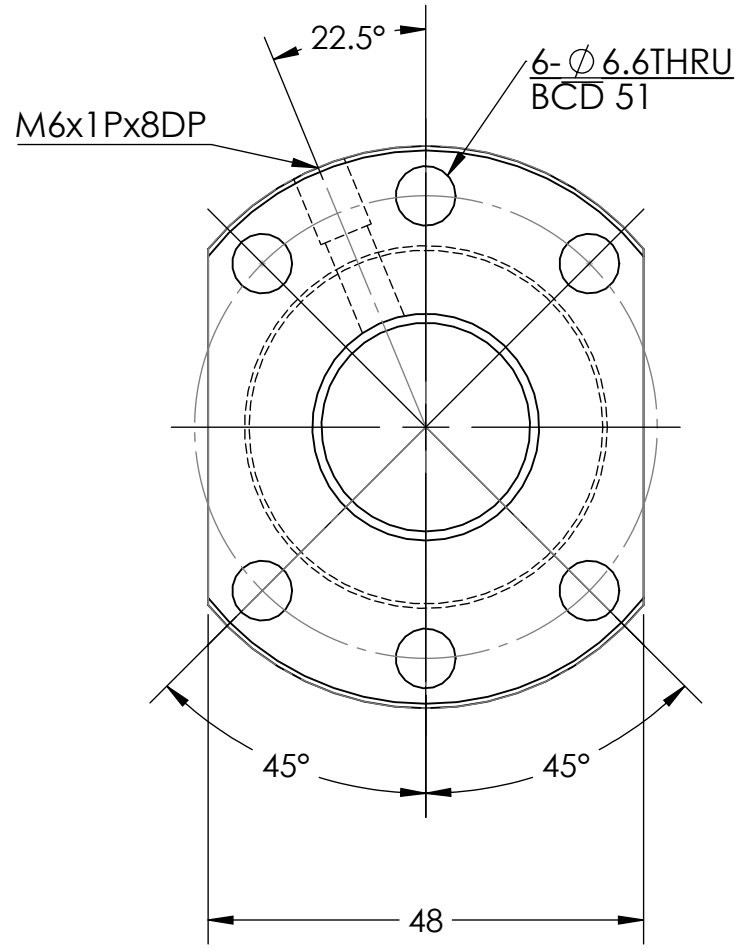


UNCONTROLLED IF PRINTED

$\sqrt{Ra6.3}$  ( $\sqrt{Ra0.4}$ )



**BREAK SHARP EDGES UNLESS OTHERWISE SPECIFIED**

PRELOAD(kgf)	~
R.D.	21.239
S.F. (kgf)	~
DRAG TRQ(kgf-cm)	~
TURN DIRECTION	R
P.C. DIA.	24.37
BALL DIA.	3
BACKLASH	0.03 MAX
CIRCUIT	4
LEAD ANGLE	7.44
DYNAMIC (kgf)	1660
STATIC (kgf)	3680
LEAD	10

ROUGH M/C	FIN M/C	GRD	MATERIAL		SHAFT:CF53/Equiv. NUT:SNCM220/Equiv.				
$\sqrt{Ra25}$	$\sqrt{Ra6.3}$	$\sqrt{Ra0.4}$	THREAD BALL TRACK		HRC 56~62				
<b>TOLERANCE mm</b>									
UP	6	30	120	300	600	1200	2400	2400 OVER	
TO	6	30	120	300	600	1200	2400	OVER	
TURN DIRECTION	± 0.1	± 0.2	± 0.3	± 0.4	± 0.5	± 0.8	± 1.0	± 1.5	
DATE	INITIALS	<b>HIWIN CORPORATION</b> 12455 Jim Dhamer Dr, Huntley, IL 60142 TITLE: <b>STANDARD STOCK BALLSCREW</b> PART NUMBER: <b>R25-10K4-FSCEW-XXXX-XXXX-0.05</b>							
DRAWN	D.W								
CHECKED	T.C.								
MFG APPR.	A.H								
SIZE	DWG. NO.	REV	SCALE	NTS					
B	W-SBS-25-10-A01	N/C							

HIWIN CONFIDENTIAL

