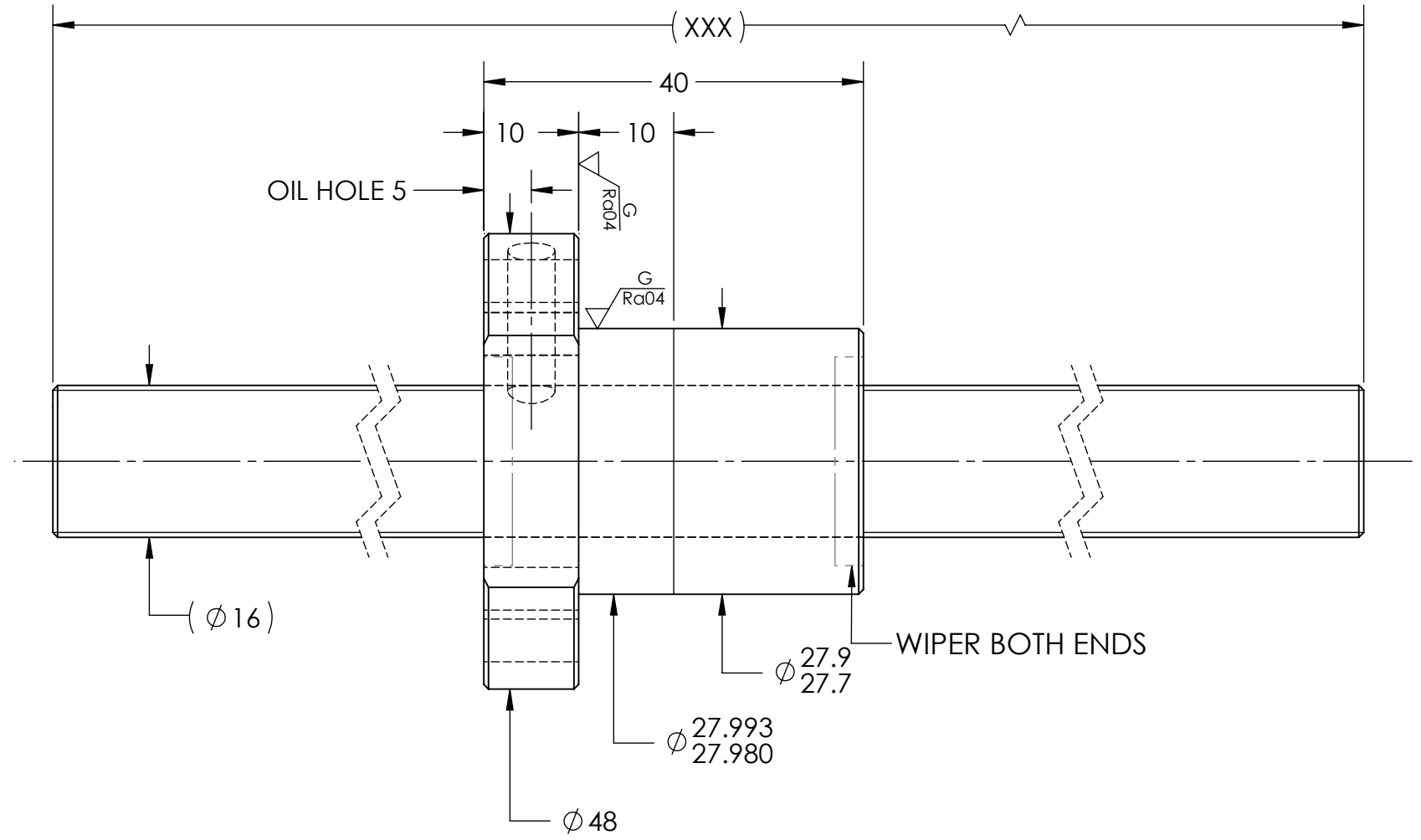
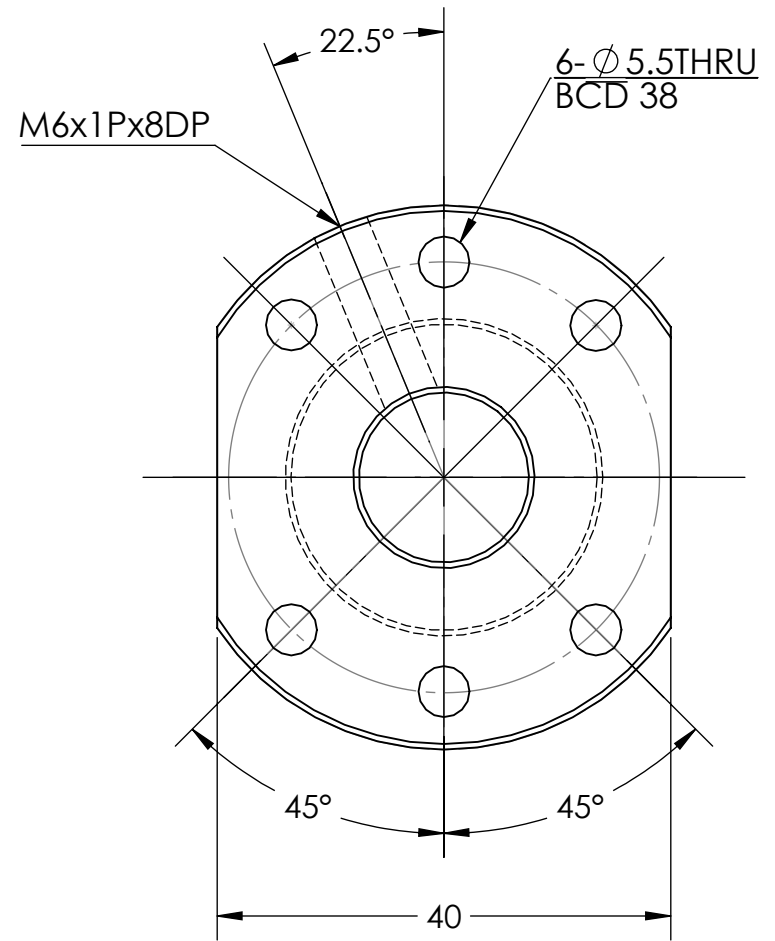


UNCONTROLLED IF PRINTED

$\sqrt{Ra6.3}$ ($\sqrt{Ra04}$)



BREAK SHARP EDGES UNLESS OTHERWISE SPECIFIED

PRELOAD(kgf)	~	ROUGH M/C	FIN M/C	GRD		MATERIAL	SHAFT:CF53/Equiv. NUT:SNM220/Equiv.			
R.D.	12.899	$\sqrt{Ra25}$	$\sqrt{Ra6.3}$	$\sqrt{Ra0.4}$		THREAD BALL TRACK	HRC 56~62			
S.F. (kgf)	~	TOLERANCE mm								
DRAG TRQ(kgf-cm)	~	UP TO	6	30	120	300	600	1200	2400	OVER
TURN DIRECTION	R		± 0.1	± 0.2	± 0.3	± 0.4	± 0.5	± 0.8	± 1.0	± 1.5
P.C. DIA.	16.175	DATE	09/30/2022	INITIALS	 HIWIN CORPORATION 12455 Jim Dhamer Dr, Huntley, IL 60142					
BALL DIA.	3.175	DRAWN	01/17/2023	D.W						
BACKLASH	0.03 MAX	CHECKED	01/17/2023	T.C.						
CIRCUIT	2.6*1	MFG APPR.	01/17/2023	A.H						
LEAD ANGLE	5.62	TITLE:		STANDARD STOCK BALLSCREW						
DYNAMIC (kgf)	860	PART NUMBER:		R16-5B1-FSZ-XXX-XXX-0.05						
STATIC (kgf)	1760	SIZE	DWG. NO.	REV	SCALE	NTS				
LEAD	5	B	W-SBS-16-5-A01	N/C						

HIWIN CONFIDENTIAL

