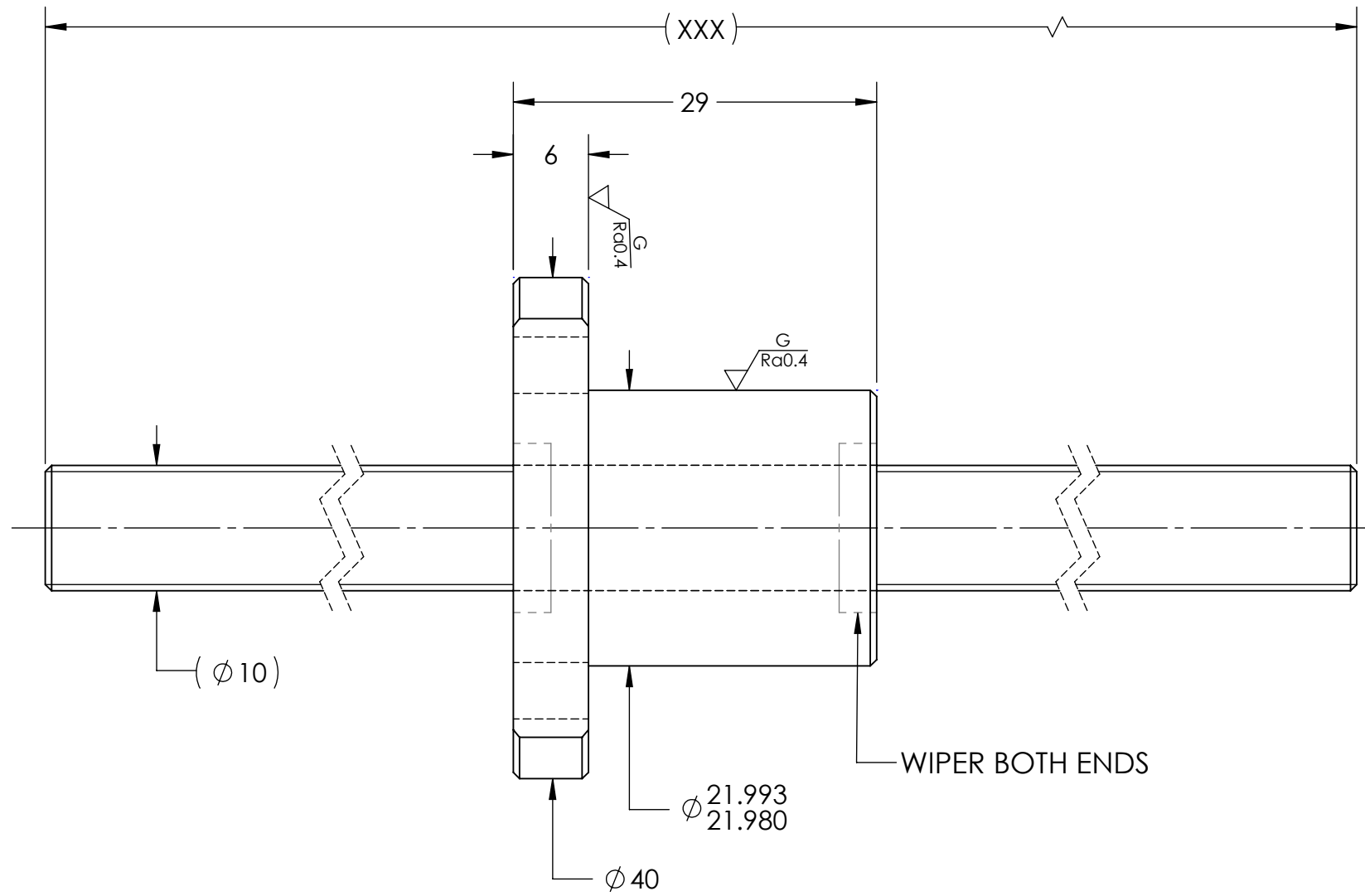
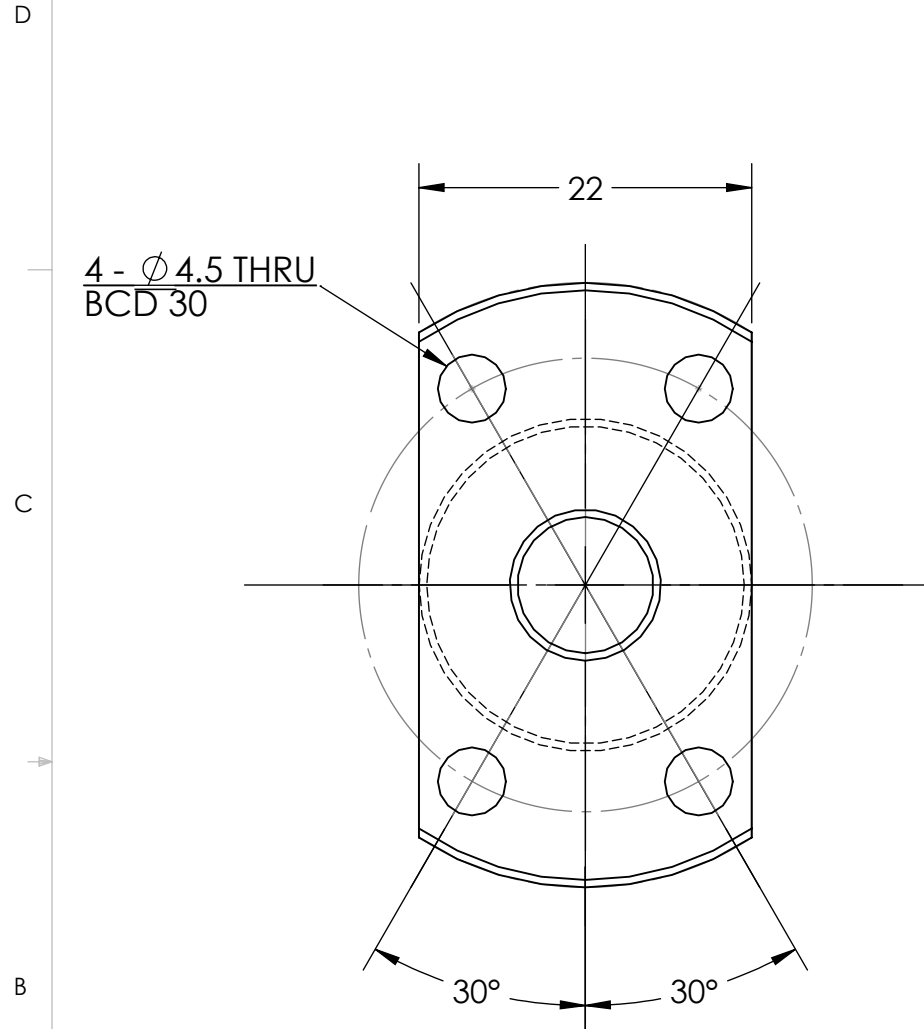


UNCONTROLLED IF PRINTED

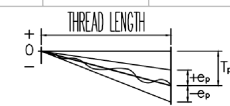
$\sqrt{Ra6.3}$  ( $\sqrt{G Ra6.3}$ )



**BREAK SHARP EDGES UNLESS OTHERWISE SPECIFIED**

PRELOAD(kgf)	~
R.D.	7.742
S.F. (kgf)	~
DRAG TRQ(kgf-cm)	~
TURN DIRECTION	R
P.C. DIA.	10.2
BALL DIA.	2.381
BACKLASH	0.02 MAX
CIRCUIT	3
LEAD ANGLE	8.87
DYNAMIC (kgf)	480
STATIC (kgf)	840
LEAD	5

ROUGH M/C	FIN M/C	GRD		MATERIAL	SHAFT:CF53/Equiv. NUT:SNCM220/Equiv.
$\sqrt{Ra25}$	$\sqrt{Ra6.3}$	$\sqrt{Ra0.4}$		THREAD BALL TRACK	HRC 56~62
<b>TOLERANCE mm</b>					
UP	6	30	120	300	600
TO	6	30	120	300	600
					1200
					2400
					OVER
	$\pm 0.1$	$\pm 0.2$	$\pm 0.3$	$\pm 0.4$	$\pm 0.5$
					$\pm 0.8$
					$\pm 1.0$
					$\pm 1.5$
DATE	INITIALS	HIWIN CORPORATION 12455 Jim Dhamer Dr, Huntley, IL 60142			
DRAWN	D.W				
CHECKED	T.C.				
MFG APPR.	A.H				
TITLE:	STANDARD STOCK BALLSCREW				
PART NUMBER:	R10-5K3-FSC-XXX-XXX-0.05				
SIZE	DWG. NO.	REV	SCALE	NTS	
B	W-SBS-10-5-A02	N/C			



HIWIN CONFIDENTIAL